



User Manual

DVD8007C



7" TFT LCD Portable DVD Player

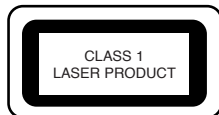
Safety precautions



The lightning flash with an arrowhead symbol within an equilateral triangle is intended to alert the user of the presence of uninsulated "dangerous voltage" within the product's enclosure that may be of sufficient magnitude to constitute a risk of electric shock to persons.



The exclamation point within an equilateral triangle is intended to alert the user of the presence of important operating and maintenance (servicing) instructions in the literature accompanying the appliance.



THIS DEVICE COMPLIES WITH PART 15 OF THE FCC RULES. OPERATION IS SUBJECT TO THE FOLLOWING TWO CONDITIONS: (1) THIS DEVICE MAY NOT CAUSE HARMFUL INTERFERENCE, AND (2) THIS DEVICE MUST ACCEPT ANY INTERFERENCE RECEIVED, INCLUDING INTERFERENCE THAT MAY CAUSE UNDESIRABLE OPERATION.

WARNING: DO NOT EXPOSE THIS APPLIANCE TO RAIN OR MOISTURE, DUE TO THE HIGH RISK OF FIRE OR ELECTRIC SHOCK, DO NOT OPEN THE CABINET DANGEROUS HIGH VOLTAGES ARE PRESENT INSIDE THE ENCLOSURE. ONLY QUALIFIED SERVICE PERSONNEL SHOULD ATTEMPT THIS.

CAUTION: DURING PLAYBACK, THE DISC SPINS AT HIGH SPEED, SO DO NOT LIFT OR MOVE THE PLAYER, DOING SO MAY DAMAGE THE DISC.

CAUTION: This Digital Video Disc Player employs a Laser System. Make sure the device is shut down prior to opening player lid. Visible laser radiation when open and interlocks defeated. Use of controls or adjustments or performance of procedures other than those specified herein may result in hazardous radiation exposure.

Safety precautions

DO NOT STARE INTO BEAM.

To ensure proper use of this product, please read this owner's manual carefully and retain for future reference. Should the unit require maintenance, contact an authorized service location, or contact us. Only qualified service personnel should remove the cover.

FCC NOTICE: This equipment has been tested and found to comply with the limits for a Class B digital device. Pursuant with the FCC Rules, Part 15. These limits are designed to provide reasonable protection against harmful interference in a residential installation.

This equipment generates, uses and can radiate radio frequency energy and, if not installed and used in accordance with the instructions, may cause harmful interference to radio communication. However, this is no guarantee that interference will not occur in a particular installation. If this equipment does cause harmful interference to radio or television reception, which can be determined by turning the equipment off and on, the user is encouraged to try to correct the interference by one of the following measures:

- Reorient or relocate the receiving antenna.
- Increase the separation between the equipment and receiver.
- Connect the equipment into an outlet on a circuit different from that to which the receiver is connected.
- Consult the dealer or an experienced radio/TV technician for help.

FCC Caution: To assure continued compliance, (example-use only shielded interface cables when connecting to computer or peripheral devices). Any changes or modifications not expressly approved by the party responsible for compliance could void the user's authority to operate this equipment.

BATTERY WARNING: The DVD player contains a Li-ION battery pack. There is a risk of fire and burns if the battery pack is handled improperly. Do not disassemble, crush, puncture, short external contacts, or dispose of in fire or water. Do not attempt to open or service the battery pack. Replace only with the battery pack designated for this product. Discard used batteries according to the manufacturer's instructions.

Safety Information

CAUTION: Use of controls or adjustments or performance of procedures other than those specified herein may result in hazardous radiation exposure.

Please carefully study this manual and always keep it available. There are, however, some installation and operation precautions which you should be aware of.

1. Read Instructions - All the safety and operating instructions should be read before the product is operated.
2. Retain Instructions - The safety and operating instructions should be retained for future reference.
3. Heed Warnings - All warnings on the product and in the operating instructions should be adhered to.
4. Follow Instructions - All operating and use instructions should be followed.
5. Cleaning - Unplug this product from the wall outlet before cleaning. Do not use liquid cleaners or aerosol cleaners. Use a damp cloth for cleaning.
6. Attachments - Do not use attachments not recommended by the product manufacturer as they may cause hazards.
7. Water and Moisture - Do not use this product near water - for example, near a bath tub, wash bowl, kitchen sink, or laundry tub; in a wet basement; or near a swimming pool; and the like.
8. Accessories - Do not place this product on an unstable cart, stand, tripod, bracket, or table. The product may n 3715019 m.5t0in aisanerspAons s use liquuahioncontrjlling prspAons a17.6(Th cleanone cwineaa

ns. Tj1

ns. Tj1 00 Use ns. Use ns. Tj1

ns. Tj1 00 Use ns. Use ns. Use ns. Use ns. Tj569999 00 Use c12j1

ns. Tj1 00 ns. Tj1
ns. Tj1 00 Use ns. Use ns. Use ns. Use ns. Tj569999 00 Use c12j1

Safety Information

14. Outdoor Antenna Grounding - If an outside antenna or cable system is connected to the product, be sure the antenna or cable system is grounded so as to provide some protection against voltage surges and built-up static charges. Article 810 of the National Electrical Code, ANSI/NFPA 70, provides information with regard to proper grounding of the mast and supporting structure, grounding of the lead-in wire to an antenna discharge unit, size or grounding conductors, location of antenna-discharge unit, connection to grounding electrodes, and requirements for the grounding electrode.

15. Lightning - For added protection for this product during a lightning storm, or when it is left unattended and unused for long periods of time, unplug it from the wall outlet and disconnect the antenna or cable system. This will prevent damage to the product due to lightning and power-line surges.

16. Power Lines - An outside antenna system should not be located in the vicinity of overhead power lines or other electric light or power circuits, or where it can fall into such power lines or circuits. When installing an outside antenna system, extreme care should be taken to keep from touching such power lines or circuits as contact with them might be fatal.

17. Overloading - Do not overload wall outlets, extension cords, or integral convenience receptacles as this can result in a risk of fire or electric shock.

18. Object and Liquid Entry - Never push objects of any kind into this product through openings as they may touch dangerous voltage points or short-out parts that could result in a fire or electric shock. Never spill liquid of any kind on the product.

19. Servicing - Do not attempt to service this product yourself as opening or removing covers may expose you to dangerous voltage or other hazards. Refer all servicing to qualified service personnel.

Safety Information

20. Damage Requiring Service - Unplug this product from the wall outlet and refer servicing to qualified service personnel under the following conditions:

- a. When the power-supply cord or plug is damaged.
- b. If liquid has been spilled, or objects have fallen into the product.
- c. If the product has been exposed to rain or water.
- d. If the product does not operate normally by following the operating instructions. Adjust only those controls that are covered by the operating instructions as an improper adjustment of other controls may result in damage and will often require extensive work by a qualified technician to restore the product to its normal operation.
- e. If the product has been dropped or damaged in any way, and
- f. When the product exhibits a distinct change in performance - this indicates a need for service.

21. Replacement Parts - When replacement parts are required, be sure the service technician has used replacement parts specified by the manufacturer or have the same characteristics as the original part. Unauthorized substitutions may result in fire, electric shock, or other hazards.

22. Safety Check - Upon completion of any service or repairs to this product, ask the service technician to perform safety checks to determine that the product is in proper operating condition.

23. Wall or Ceiling Mounting - The product should be mounted to a wall or ceiling only as recommended by the manufacturer.

24. Heat - The product should be situated away from heat sources such as radiators, heat registers, stoves or other products (including amplifiers) that produce heat.

25. Rechargeable battery - Charge voltage cannot be below 12V.

Introduction

Your new portable DVD player is designed for you to enjoy all forms of disc media. Its slim shape allows you to easily carry it with you and enjoy movies and music anywhere. Your player incorporates the latest digital audio/video (AV) technologies to give you the ultimate in listening and viewing pleasure.

Your new player also supports CD and MP3. Your player also has several unique features, including an S-video output (for greater picture clarity), large active LCD screen, multi-angle and multi-language, Parental Control (to prevent children from viewing inappropriate content), and Kodak Picture CD compatibility (so you can show photos on your TV). This is a truly multimedia machine designed for the multimedia world to enjoy.



Introduction

UNPACKING

First inventory the contents of your Portable DVD player package:

Portable DVD Player	1
Audio Cable	1 pair
S-Video Cable	1 pair
Video & Coaxial Cable	1 pair
LI-ION Battery Pack	1
Remote Control	1
External Power Adapter	1
Power Cord	1
Cigarette Lighter Adapter	1
Operating Manual	1
Stereo Headphone	2
Car bag	1

If any item should be damaged or missing, please contact your dealer without delay.

Keep the packaging materials, you may need them to transport your player in the future.

WARNING: Changes or modifications made to this equipment, not expressly approved by us or parties authorized by us will void all manufacture warranties.

Table of Contents

Safety Precautions/ Information	1-6
Introduction	7-8
Table of Contents	9
Quick Starting Guide	10-11
Remote Control	12
Connecting to a TV	13-14
Connecting to Optional Equipment	15-18
Playing Back a Disc	19-22
Playing Back Your KODAK Picture CD	23
JPEG Playback	24-25
MP3 Playback	26
Locating a Specific Title, Chapter or Track	27
Playing Repeatedly	28-29
Playing in Favorite Order	30-31
Zooming a Picture	32
Selecting Subtitles	33
Using the On-Screen Display	34
Selecting the Camera Angle	35
Setting the Parental Lock	36-37
Rechargeable Battery Installation & Use	38-40
Battery Storage	41
Customizing the Function Settings	42-51
Specifications	52
Trouble Shooting Guide	53

Quick Starting Guide

1. Connecting to an External Power Source

Connect the power cord (supplied with the player) to the side input plug and to a wall outlet. Do not use any other device otherwise specified by your dealer.

2. Open the protective cover

The cover opens to a maximum 135° only, so please do not try to open it any further.



3. Press the open button on the left to open the disc cover

Never press the OPEN button on the left during playback.

4. Inserting a DVD disc with label side upwards.

Align the center of the DVD disc with the center of the disc guide. Press gently down on the DVD to snap the disc into place, then close the disc cover.

5. Slide the side power switch to 'ON'.



If you want to replace another disc or if you want to pull out disc, you should press STOP twice, then after finish spinning disc, then press OPEN button, then take out it.

Quick Starting Guide

6. Press the **PLAY** button on the player face (Depends on the DVD title, press the **ENTER** button)

In general, the DVD already inserted into the player will start reading automatically when power is turned on.



The DVD player will immediately start rendering the DVD program.

When you want to stop, press the **STOP** button, it will return to the logo. To power off the unit, slide the **ON/OFF** switch to the **OFF**.



The DVD player will automatically power off in 20 minutes after entering screen saver mode. To reset the unit, first slide power switch to 'OFF', and then slide it to 'ON'.



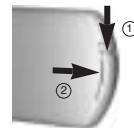
ON/OFF

Remote Control

PREPARING THE REMOTE CONTROL

1. **Open the cassette cover.**

Slide the cover in the direction of the arrow 2 while folding down as the arrow 1.



2. **place the battery into the guide.**



3. **Insert the tray into the remote control.**



When you place the battery into the guide, make sure the polarity + is faced up.



OPERATING WITH THE REMOTE CONTROL

Operating DVD video player with the remote control.

The remote control must point at the remote sensor, in order for the DVD player to function correctly.



REMOTE SENSOR

Connecting to a TV

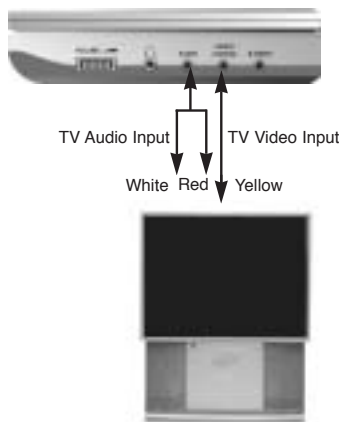
SETTING UP YOUR PLAYER

Step 1: connect the audio cables to AUDIO OUT of the DVD player..

Step 2: connect the yellow cable to the VIDEO on the side of your player.

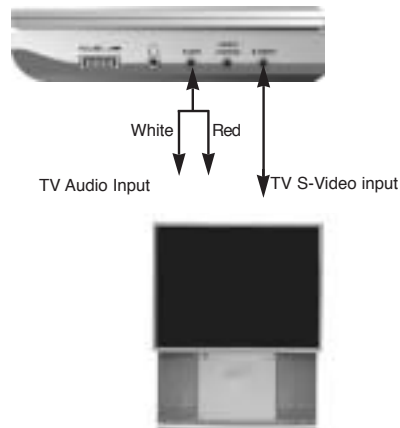
(For TVs that support S-Video Output please follow the diagram "BETTER" below.)

GOOD



Connecting to a TV

BETTER



Connect the DVD video player with an optional S -Video cable, if the TV has an S -Video input. Do not connect the yellow video cable if using the S -Video cable.




- Turn off the power and unplug both units before setting up any connections.



Connecting to Optional Equipment

Enjoying Dolby Pro Logic Surround Sound (GOOD) Dolby Pro Logic Surround

Enjoy the dynamic realistic sound of Dolby Pro Logic Surround by connecting an amplifier and speaker system (right and left front speakers, a center speaker, and one or two rear speakers).



Connecting to Optional Equipment

This product incorporates copyright protection technology that is protected by method claims of certain U.S. patents and other intellectual property rights owned by Macrovision Corporation and other rights owners. Use of this copyright protection technology must be authorized by Macrovision Corporation, and is intended for home and other limited viewing uses only unless otherwise authorized by Macrovision Corporation. Reverse engineering or disassembly is prohibited.

It is forbidden by law to copy, broadcast, show, play in public, and rent copyrighted material without permission.

DVD video discs are copy protected, and any recordings made from these discs will be distorted.

Manufactured under license from Dolby Laboratories. "Dolby" and the double-D symbol are trademarks of Dolby Laboratories.

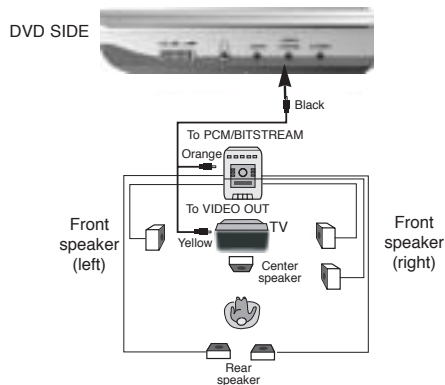


- Adjust the volume of your receiver to a comfortable listening level to avoid any speaker damage.
- When connecting and disconnecting the DVD video player, turn off the amplifier to avoid any speaker damage.

Connecting to Optional Equipment

Enjoy Dolby Digital (BETTER) Dolby Digital

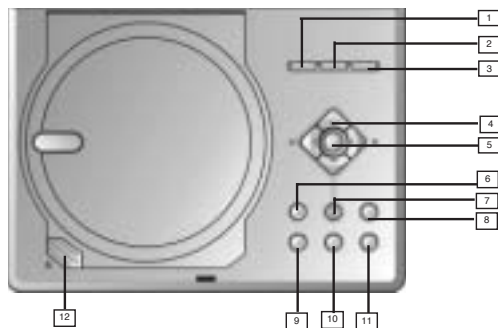
Dolby Digital programming can deliver surround sound with five discrete full range channels plus a sixth channel for a subwoofer. You can enjoy your DVD with a Dolby Digital. All you need is to connect your DVD player to a Dolby Digital receiver or a Dolby Digital Ready receiver with an external decoder.



- In case of Dolby Digital, you should setup to "SPDIF/PCM" or "SPDIF/RAW".

Playing Back a Disc

CONTROLS FOR BASIC PLAYBACK



- | | |
|----------------------|---------------|
| 1. DISC MENU | 7. SETUP |
| 2. TV MODE | 8. NEXT |
| 3. SUB TITLE | 9. PAUSE |
| 4. DIRECTION BUTTONS | 10. PLAY |
| 5. ENTER | 11. STOP |
| 6. PREV | 12. OPEN/PUSH |

Playing Back a Disc

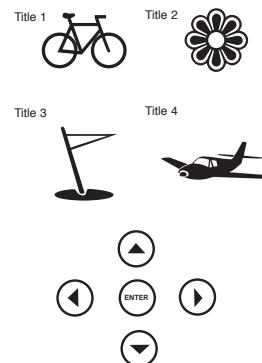
HOW TO START PLAYBACK FROM THE MENU SCREEN

1. Press **TITLE/MENU** to access the menu screen.

2. Press **^/V/</>** or the number buttons to select the title.

3. Press the **ENTER** or **PLAY** button.

The DVD video player will start playback from the title selected.



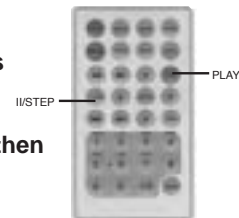
Note:

You also can input the assigned number of the title to select it directly.

HOW TO PAUSE PLAYBACK (STILL PLAYBACK)

Press the **II/STEP** once during playback, then press **PLAY** to resume normal playback. Press **II/STEP** repeatedly during playback, the picture will advance one frame each time, then press **PLAY** button to resume normal playback.

During the still playback the sound is muted. MP3 CD, Audio CD and Picture CD do not have the step feature.

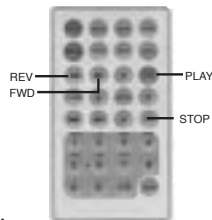


Playing Back a Disc

HOW TO STOP PLAYBACK

Press the **STOP** button.

The player is stopped.



FAST FORWARD & REWIND

You can playback a disc at 2x, 4x, 8x, 16x or 32x the normal speed for fast forward or rewind.



Press the **REV** or **FWD** button during playback.

The playback speed becomes double the normal speed. The playback speed changes, each time you press the REV or FWD button.

TO RESUME NORMAL PLAYBACK.

Press **PLAY**.



Note:

The function is invalid on some DVD discs.

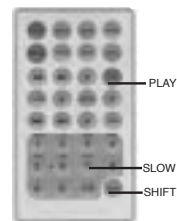
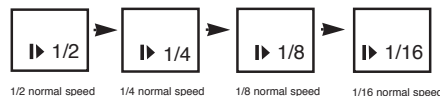
Playing Back a Disc

PLAYING IN SLOW-MOTION

A disc can also be played back in slow-motion.

1. Press **SHIFT** to set shift on so as to use the **SLOW** button.

TV SCREEN



2. Press the **SLOW** button during playback

The playback speed becomes 1/2, 1/4, 1/8, or 1/16 of the normal speed each time you press the SLOW button.

TO RESUME NORMAL PLAYBACK.
Press **PLAY**.



- During REV, FWD and slow-motion playback, the sound is muted.
- The function is invalid on some DVD discs.

Playing Back Your KODAK Picture CD

NORMAL

When a Kodak Picture CD is loaded, an automated slide show is launched. Each picture in the current directory will be displayed consecutively in a slide-show fashion and will be scaled to fit most of the screen.

To display an image indefinitely, press the **PAUSE** key. To view the Next or Previous picture press the **▶▶** or **◀◀** keys. To resume the slideshow press the **ENTER** key.

REPEATING THE SLIDESHOW

At the end of your picture slideshow, each image is reduced to a “thumbnail” sized display. To view your slideshow presentation again, press **◀◀** button.

Important: Let the player complete it's layout of twelve pictures before pressing **▶▶** button again to view the next twelve. When at the beginning, press **ENTER** and your presentation will begin.

MENU

The **MENU** key is used to display thumbnail pictures from the stop position. After it is enabled, up to twelve scaled-down thumbnail pictures will be displayed on the screen. The **▶▶** and **◀◀** can be used to display the **NEXT** and **PREVIOUS** twelve pictures in the current directory.

Note: On the thumbnail screen, You can highlight MENU and enter it to get help information.

JPEG Playback

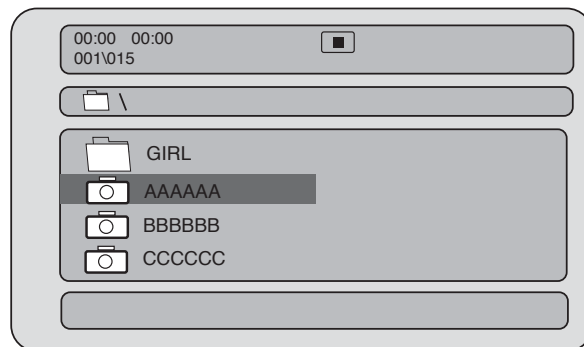
YOU CAN USE YOUR DVD PLAYER TO VIEW PHOTOGRAPHS STORED ON A CD-R. THE PHOTOGRAPHS ON THE DISC NEED TO BE SAVED IN THE JPEG FILE FORMAT. FOR MORE INFORMATION ABOUT JPEGS PLEASE VISIT WWW.JPEG.COM.

PLAYING BACK JPEG FILES

1. Place the CD on the disc tray.

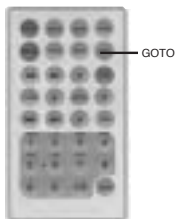
2. Select a folder or a picture contained on the CD. After the CD is loaded, a menu will appear on the screen.

Press UP or DOWN to select a folder, and press ENTER/PLAY to view folder contents (shown in right column as below).



You can use the GOTO to select JPEG.

JPEG Playback



3. Menu

During the playback, press MENU to access thumbnail menu. For previewing JPEG files, press MENU again to return to JPEG folders.

CREATING YOUR OWN PICTURE CDS

Using your computer save pictures as JPEG format and burn them on a CD-R disc, then you can watch on your TV.

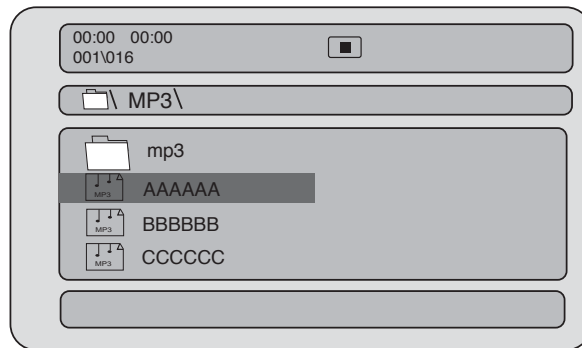
MP3 Playback

WHAT IS MP3?

MP3 refers to a new format of music files available for playback over the internet because of the popularity to download music from MP3 websites on to ones computer.

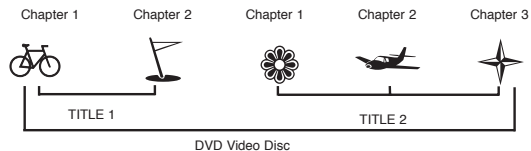
PLAYING AN MP3 FORMAT

1. Insert an MP3 CD, the DVD player will initialize the disc when the tray is closed and the directory (folder) will be shown in an MP3 MENU on screen.
2. Press UP/DOWN to select and highlight an MP3 file (song).
3. Press ENTER to play the MP3 file.



Locating a Specific Title, Chapter or Track

DVD DISCS ARE NORMALLY DIVIDED INTO TITLES WHICH ARE SUB-DIVIDED INTO CHAPTERS. MOREOVER, CD AND MP3 CD ARE DIVIDED INTO TRACKS.



LOCATING A TITLE USING THE TITLE MENU

You can locate a specific title using the title menu function, if a DVD video disc contains a title menu.

1. Press the **TITLE** button

On the LCD or TV screen, the title menu will appear.

2. Press the **▲▼◀▶** button to select the title you want.

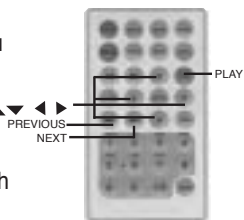
You can also directly locate a specific title by pressing its assigned number with the number buttons.

3. Press the **PLAY** button

This will cause the DVD video player to start playback from chapter 1 of the title selected.

You also can use skip buttons to select a title or track desired:

Press **◀◀** or **▶▶** button repeatedly till the one displays.



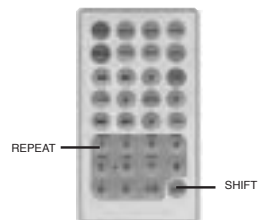
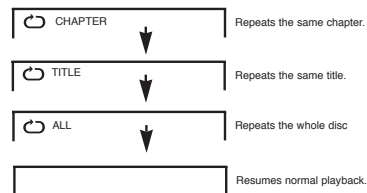
Playing Repeatedly

THIS DVD VIDEO PLAYER ALLOWS YOU TO PLAYBACK A SPECIFIC TITLE, CHAPTER, TRACK, OR SEGMENT REPEATEDLY. (TITLE REPEAT, CHAPTER/TRACK REPEAT, A-B REPEAT)

HOW TO REPEAT A TITLE, CHAPTER, OR DISC

During normal playback, press the **REPEAT** button (To be set **SHIFT** on).

The repeat mode changes, each time you press the **REPEAT** button.



Playing Repeatedly

HOW TO REPEAT A SPECIFIC SEGMENT

(The REPEAT function to be set off)

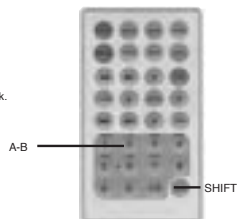
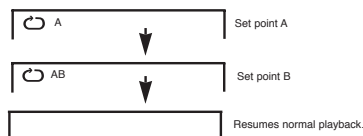
1. Press the A-B button at the beginning of the segment in which you want to repeat playback (point A) (To be set SHIFT on).

2. Press the A-B button again at the end of the segment (point B)

The DVD video player will automatically return to point A and start to repeat playback of the selected segment (A-B).

3. Press the A-B button to cancel the A-B repeat function

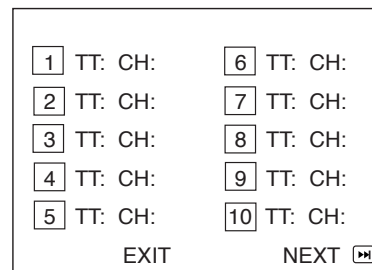
The DVD video player will resume to normal playback.



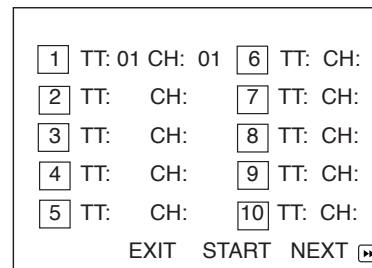
Playing in Favorite Order

HOW TO SET TITLES, CHAPTERS, OR TRACKS IN A FAVORITE ORDER

1. Press the PROGRAM button (To be set SHIFT on). PROGRAM MENU displays on the screen.



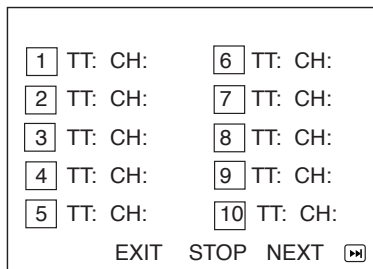
2. Using the numbered button, select the items you want in the order you want them programmed in. The number of the item selected will be input into the PROGRAM volume.



Playing in Favorite Order

3. Highlight **START** and press **ENTER** to start program playback.

4. To clear the programmed, move the cursor to **STOP** and then press **ENTER** to confirm it.

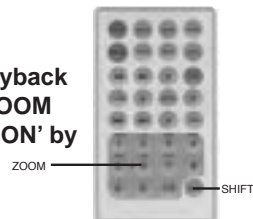


Zooming a Picture

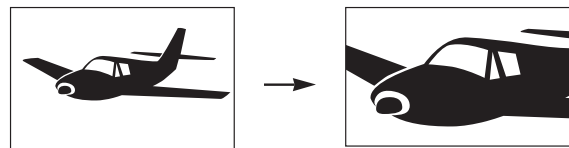
ZOOMING A PICTURE

This DVD video player allows you to zoom into a picture as well as shift the zoom point.
(To be set **SHIFT** on)

Press **ZOOM** during normal playback or slow - motion. (To use the **ZOOM** button, it should be set 'SHIFT ON' by pressing **SHIFT**.)



The player magnifies in the center of the picture.
If you press **▲ ▼ ◀ ▶** during zoom playback, the zoom point shifts.



To cancel the zoom function, press **ZOOM** again.

Selecting Subtitles

HOW TO DISPLAY SUBTITLES

You have the option to select a preferred subtitle from those included on the DVD video disc.

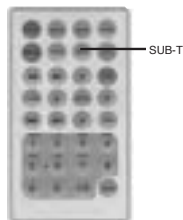
Press the **SUB-T** button during playback.

SUBTITLE 1 ↓ 1/03

SUBTITLE 2 ↓ 2/03

SUBTITLE 3 ↓ 3/03

SUBTITLE OFF



To **TURN OFF** the subtitles.

Press the **SUB-T** button during playback until the subtitles disappears.

SUBTITLE OFF ↓

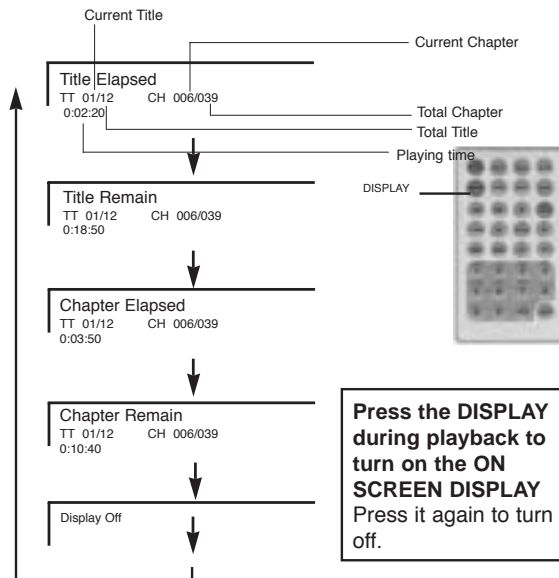
Using the On-Screen Display

THIS UNIT ALLOWS YOU TO VIEW THE OPERATIONAL STATUS AND DISC INFORMATION ON YOUR TV SCREEN.

CHECKING THE OPERATIONAL STATUS

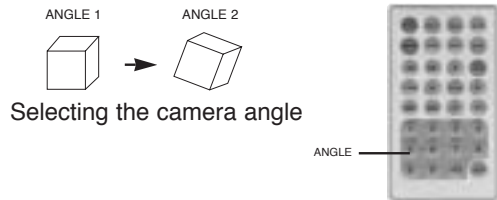
With this function you can view on your TV the following:

- Current title
- Track number
- Total playing time



Selecting the Camera Angle


THIS DVD VIDEO PLAYER ALLOWS YOU TO SELECT FROM SEVERAL DIFFERENT ANGLES.

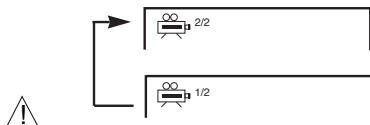


HOW TO CHANGE THE CAMERA ANGLE

If the DVD video disc was recorded with multiple angles, you have the option to change the camera angle of the scene you are watching.

Press the ANGLE button while playing back a scene recorded with multiple angles (To be set SHIFT on).

- You may only press the ANGLE button when the angle icon  is flashing on the DVD display.
- Each time you press the ANGLE button, the angle will change.



- The angle function will not work on DVD video discs that does not contains recorded with multiple angles.

Setting the Parental Lock

YOU CAN USE THE PARENTAL LOCK FUNCTION ONLY WITH DVD VIDEO DISCS EQUIPPED WITH THE PARENTAL LOCK FEATURE.

SETTING THE PARENTAL LOCK

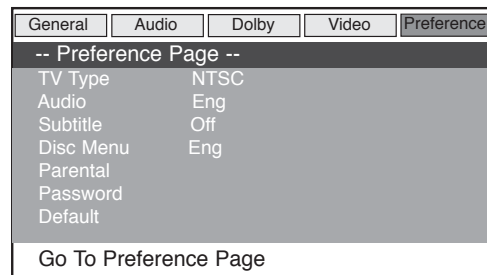
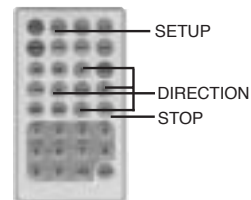
DVD video discs equipped with the parental lock function are rated according to their content. The contents allowed by a parental lock level and the way a DVD video disc can be controlled may vary from disc to disc. For example, if the disc allowed, you could edit out violent scenes unsuitable for children and replace them with more suitable scenes, or lock out playback of the disc all together.

1. Press STOP twice during playback

2. Press SETUP

The SETUP MENU appears on the screen.

3. Select Preference Page, press ENTER.

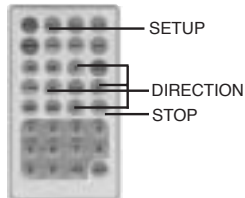


Setting the Parental Lock

4. Select Parental.

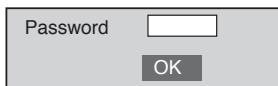
5. Select ratings, press ENTER

- 1 Kid Safe
- 2 G
- 3 Pg
- 4 Pg 13
- 5 Pgr
- 6 R
- 7 Nc17
- 8 Adult



6. Enter your password then press ENTER.

The pre-set password is **3308**



7. Press **SETUP** to exit setup, press **ENTER** to start.

TO CHANGE YOUR PASSWORD:

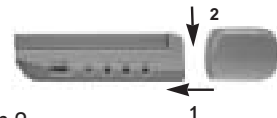
1. Follow step 3 to select password change.
2. Enter old password.
3. Enter new password.
4. Re-enter to confirm your new password.
5. Press **ENTER**.
6. Press **SETUP** to exit.

Rechargeable Battery Installation & Use

INSTALLING & REMOVING THE BATTERY PACK

1. Make sure the unit is powered off and unplugged.

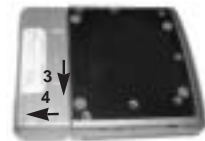
2. Attach the battery pack to the outlet of the unit as illustration 1, and align them with each other till you hear a click sound as illustration 2.



Removing the Battery Pack

1. Make sure the unit is powered off and unplugged.

2. Push the battery pack forward as arrowhead 3 (the arrow direction should be printed reverse.) while sliding the latch as 4 (at the bottom of the unit)



USE AND MAINTENANCE

THIS UNIT IS SUPPLIED WITH HIGHLY-EFFECTIVE RECHARGEABLE BATTERY (LI-ION). SUCH BATTERY PACK A HIGH STORAGE CAPACITY AND LOW LEVEL OF DEGRADATION. THE LATTER MEANS THAT THE BATTERY CAN ALSO BE RECHARGED WHEN ONLY PARTLY SPENT.

Plug the AC adapter into the battery. Please fully charge the battery prior to first use.



AC Adapter/charge input

Rechargeable Battery Installation & Use

CHARGING THE BATTERY PACK

The battery pack can be charged in two ways:

1. Charge the battery directly.
2. Charge the battery while it is connected to the DVD player.

1. To charge the battery pack directly, connect the AC/DC adapter to the DC IN jack on the left side of the battery pack. Connect the power plug into the outlet .

The battery pack charge indicator will turn red and the battery pack will start to charge.

When the battery pack is fully charged, the battery pack charge indicator will turn green.

2. To charge the battery pack while it is connected to the DVD player, make sure the POWER OFF of DVD player. Connect the AC/DC adapter to the DC IN jack on the left side of the DVD player or battery. Connect the power plug into the outlet.

The provided battery can be recharged for about 300 times. It takes about 4-5 hours to recharge the battery, then the red indicator then the red indicator will change from red to green when it is full. Please continue recharging it for about 1hours. A fully charged battery can power the unit for about 2.5 hours. And it depends on the operations of the player such as brightness of the screen, volume level, etc.

Recharge the battery in time when fully spent in order to

Rechargeable Battery Installation & Use

maximize its life.

Never recharge the battery which is already fully charged. For the longterm using of customer, when fully charged in the 2. mode, make sure unplug the AC/DC adapter from the DVD player first, then disconnect the battery from the unit.

Under no circumstance should you short out the battery, store it in a metal container, or leave it in a humid or damp environment. Store the battery in an airtight container if possible. Recharge effectiveness will degrade when environmental temperatures drop below 10 °C or exceed 35 °C.



Do not use car adapter for battery recharging.

Battery Storage

1.Storage Temperature and Humidity

(Short-term)

In a dry location with low humidity(Max.85%), no corrosive gases, at a temperature range of -20 °C to 45°C.

In a location where humidity is extremely high or with temperature below -20°C or above 45°C, the metallic parts of battery will rust and result in electrolyte leakage due to expansion or contraction in parts composed of organic materials.

1.Long-term Storage (2 years,-20°C to 35°C)

As long-term storage can accelerate battery self-discharge and lead to the deactivation of reactants, locations where the temperature ranges between 10°C and 30°C are suitable for long-term storage.

When charge for the first time after long-term storage, deactivation of reactants may have led to increased battery voltage and decreased battery capacity. Restore such batteries to original performance through repeating several cycles of charge and discharge.

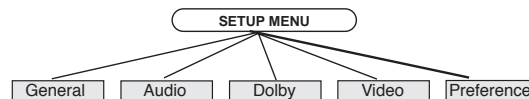
When storing battery for more than 1 year, charge at least once a year to prevent leakage and deterioration in performance due to selfdischarge. When using a rapid charger of voltage detection type, carry out charge and discharge at least once every 6 months.

Note:

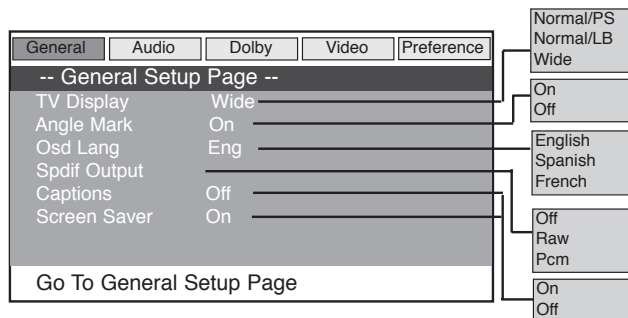
To get the best performance, charge your battery for more than 12 hours at the first time after unpacking, and carry out 3 cycles of charge and discharge under proper conditions.

Customizing the Function Settings

THIS UNIT ALLOWS YOU TO CUSTOMIZE THE PERFORMANCE TO YOUR PERSONAL PREFERENCE.



1. Press **SETUP**.
2. Press **▲/▼/◀/▶** to select category (highlight), then press **ENTER**.
3. Press **SETUP** to quit the menu.



TV Display Menu

DVDs are produced in a variety of screen aspect ratios. This menu enables you to select one of three aspect ratios:

Customizing the Function Settings

- Normal/PS
- Normal/LB
- Wide

Select the most appropriate aspect ratio for the DVD being viewed.

1. Normal/PS

Normal Pan and Scan is used for most normal television broadcasts. It has an aspect ratio of 4:3. If you select this setting when viewing a DVD the picture will fill the screen but, you will not see the left and right edges of the picture.



2. Normal/LB

Normal Letter Box will show the DVD in its original aspect ratio so depending on the size of your television screen, you may see black borders above and below the picture.



3. Wide

Choose this setting if you have a widescreen television. This is the default setting.

Customizing the Function Settings



Angle Mark

The Angle Mark can be set On or Off. It must be set to On to enable you to view the different camera angles if the DVD has this feature. On is the default setting.

On Screen Display Language (OSD Lang)

The on screen display language can be set to any of four options shown below. Once a language is selected the menus will immediately change to that language. The default is **English**.

SPDIF Setup

The Sony Philips Digital Interface options are Off, Raw or PCM.

Raw

Raw is an uncompressed digital bitstream, which is processed sequentially. The Dolby Digital Audio contained on the disc, is passed directly to the amplifier through the digital coaxial output, without the need for decoding. This is the default setting.

Customizing the Function Settings

PCM

PCM (Pulse Code Modulation) is an uncompressed digital format that ensures a very high quality, but it does not support the surround sound effect. When selected, the audio contained on the disc is passed directly to the amplifier through the digital coaxial output.

Captions

This function works in the following conditions only:

1. Connect to the external NTSC TV with captions function.
2. Playback the discs with captions function.

Captions are a standardised method of encoding text into an NTSC television signal. They differ from subtitles in that they are carried differently in the signal and are commonly used for onscreen text designed for the hearing impaired, i.e. the text appears under the person speaking and they include descriptions of sounds and music.

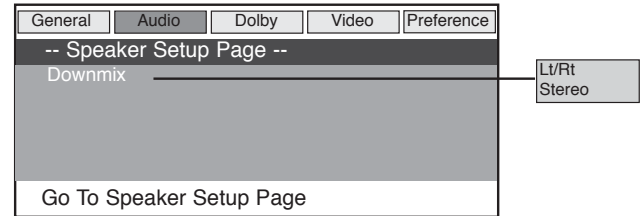
They can be set to either On or Off. The default is Off.

Screen Saver

The screen saver can be set to either ON or OFF.

When ON is selected the screen saver will appear if the DVD player is left in the STOP mode or PAUSE mode for between 3 and 4 minutes. The default is On.

Customizing the Function Settings

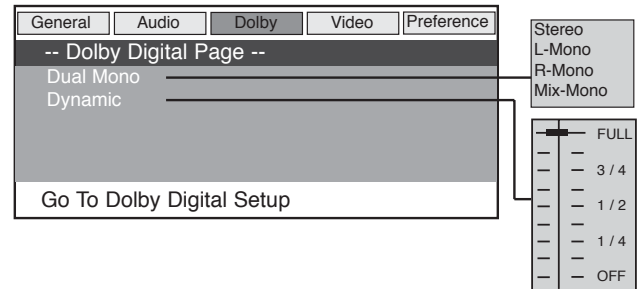


Speaker Setup

This menu gives you the option of sending either the left and right stereo channels as a single audio output (Lt/Rt) or the normal stereo output. Stereo is the default setting.

If you are connecting your DVD player to a Dolby Pro Logic decoder via the coaxial output, select the Lt/Rt option.

If connecting to a basic stereo audio system select the Stereo option.



Customizing the Function Settings

Dolby Digital Setup

The Dolby Digital options allow you to choose the way the stereo signal is mixed.

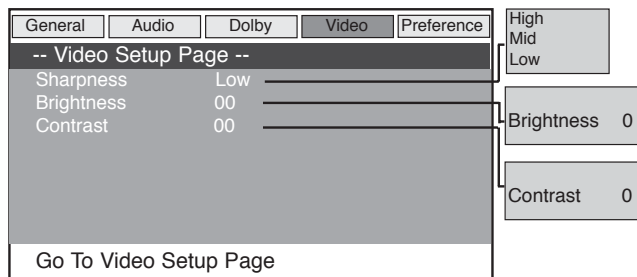
Dual Mono

The audio out description of these selections is shown in the table on the next page. The default is Stereo.

MODE	LEFT SPEAKER	RIGHT SPEAKER
STEREO	STEREO-L	STEREO-R
L-MONO	L-MONO	L-MONO
R-MONO	R-MONO	R-MONO
MIX-MONO	L-MONO + R-MONO	L-MONO + R-MONO

Dynamic

This function allows you to alter the dynamic range compression of the sound output. High volume outputs (gunfire, explosions) are softened enabling you to watch your favourite movie without disturbing others. The default is Full.



Customizing the Function Settings

Video Setup

Sharpness

The sharpness of the television picture can be set to High, Mid or Low. The default is Low.

Brightness

The picture brightness can be adjusted as follows. Select Brightness and press the right arrow button. This will display a bargraph that indicates the brightness setting.

Use the left and right arrows to adjust the brightness level. It can be set to + or - 20. The default is 0.

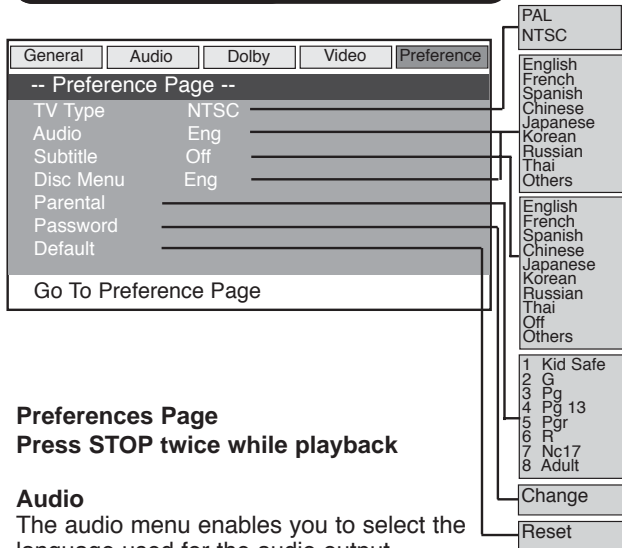
Contrast

The picture contrast can be adjusted as follows. Select Contrast and press the right arrow button. This will display a bargraph that indicates the contrast setting.

Use the left and right arrows to adjust the contrast level. It can be set to + or - 16. The default is 0.

Press the ENTER button to return to the Video Setup Page.

Customizing the Function Settings



Preferences Page

Press **STOP** twice while playback

Audio

The audio menu enables you to select the language used for the audio output. There are eight languages as shown in the menu opposite. The default is English.

Subtitle

The subtitle menu enables you to select the language used for the subtitles of the DVD playback. There are eight languages presented on the menu plus an Off option if you do not want

Customizing the Function Settings

to view the subtitles.
The default is English.

If you want to see and change the subtitle while playback, you can control by SUB-T button on Remote control unit.

Note:

Depends on the disc which does not have linked-up information, the subtitle may not work properly.

Disc Menu

The Disc Menu enables you to select the language used for the menus presented on the DVD. There are eight languages presented on the menu. The default is English.

Parental

This facility enables you to set a content level above which DVDs will not play. There are eight levels, the lowest being "Kid Safe" then increasing in level to "Adult". For example if you set a level of "Pg 13", any DVDs rated "Pgr" and above will not play. There is also an option to turn the parental control function off. When you navigate to highlight the required level and select by pressing the ENTER button you will be asked for a password. Enter the four digit password and press the ENTER button to set the parental control level. (The password is initially set to "3308".) The default is ADULT.

Customizing the Function Settings

Password

This menu enables you to change the four digit password that is used to set the parental control. Navigate to highlight the change option and press the ENTER button. The password change menu will be displayed with the first field selected.

Enter the existing (old) password. This is initially set to "3308". The next field will be selected.

Enter a new four digit password. The next field will be selected.

Confirm the password change by entering the new password again then press the ENTER button.

Default

This menu enables you to reset the functions of the DVD player to the initial factory settings.

Select Reset and press the ENTER button.

Specifications

DVD VIDEO PLAYER/OUTPUTS

DVD VIDEO PLAYER

AC Adapter Power supply	100-240V AC 50/60Hz
Power consumption	9W
Weight	2.0 kg
External dimensions	200x 37 x 155mm (W/H/D)
Signal system	NTSC/PAL
Laser	emiconductor laser, wavelength 650 nm

OUTPUTS

Video output	1.0 V (p-p), 75 Ω , negative sync., pin jack x 1
Audio output (digital audio)	0.5 V (p-p), 75 Ω , pin jack x 1
Audio output (analog audio)	2.0 V (rms), 10K Ω , pin jack(L,R) x 1

Trouble Shooting Guide

Symptom	Correction
No power	<ul style="list-style-type: none">• Connect the power plug into the power port securely.
No picture/sound	<ul style="list-style-type: none">• Check the Input/Output button, make sure it is slided to Output in playback mode, and slided to Input in A/V input mode.• If playback through a TV, verify the connection between them: audio cable, video cable or S video cable.
Rolling b/w picture	<ul style="list-style-type: none">• Adjust the vertical hold on your TV.
Black & White picture	<ul style="list-style-type: none">• Damaged S conector (bent pin).
The player does not start playback	<ul style="list-style-type: none">• Insert a playable disc. (Check the disc type and color system).• Place the disc with the playback side down and correctly inside the guide.• Clean the disc.• Cancel the parental lock function or change the parental lock level. (<i>The Pre-set password is 3308.</i>)• Reset the portable DVD player.